

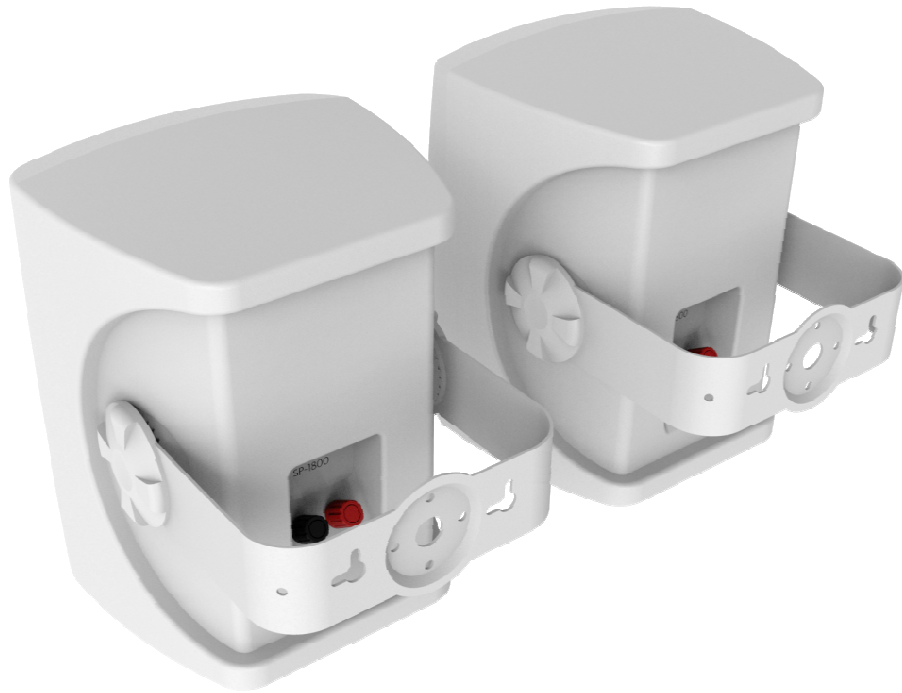
SP-1800 PAIR 3-WAY WALL LOUDSPEAKERS

Snapshot



*****NEW! SUPERCEDING SP-1700 FEB 2016*****

- > 5.25" Woofer 50w loudspeakers
- > Wall brackets included with 60° range of tilt adjustment
- > White, sold in pairs



Details

Vision's SP-1800 professional wall mounted loudspeakers are super-easy to install, look beautiful, and produce rich and powerful sound.

They are 240mm tall and use a 5.25 inch woofer – the most popular size for classroom, meeting room, and boardroom applications.

Three-Way

These loudspeakers use three drivers; a woofer, a squawker, and a tweeter. Asking a driver to produce a wide range of frequencies is always a compromise, so dividing the sonic range into three means each driver has a narrower range of frequencies to produce, resulting in less distortion and clearer sound.

Bass Reflex

A bass reflex port allows greater excursion of the woofer, allowing the woofer to produce lower frequencies, and the phase-delayed movement of air from behind the woofer to the front reinforces the bass even more.

Rugged Grille

A metal grille protects the drivers from physical interference.



Tough Finish

Constructed with tough ABS plastic, the finish withstands the rigors of the professional use.

Pro AV Applications

In small to medium presentation environments a wide dispersion is generally more important than microphone feedback management, so no horns are used.

Horizontal C bracket

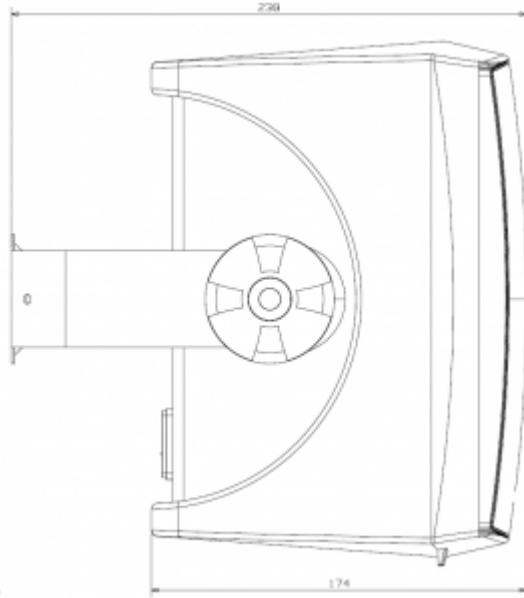
The adjustable brackets allow the installer to easily angle up 30° or down 30°. Or leave the brackets off and use as shelf speakers.

Note: these are passive loudspeakers – there is no amplifier built in – so they need to be used with an external amplifier.

Manual

Specifications

PRODUCT DIMENSIONS: 240 x 178 x 193 mm /9.45" x 7" x 7.6" (tall x wide x deep for each



speaker)

PACKAGED DIMENSIONS: 465 x 205 x 270 mm / 18.3" x 8.1" x 10.63"

PRODUCT WEIGHT: 4.2 kg /9.26 lbs (per pair)

PACKAGED WEIGHT: 4.67 kg /10.23 lbs (per pair)

CONSTRUCTION MATERIAL: ABS

COLOUR: White

TECHNICAL DETAILS:

Power Handling: 50 watts (RMS)

Woofers: 5.25"

Squawker: 1"

Tweeter: 0.5"

Input Terminals: Binding post

Output Impedance: 8 ohms

Sensitivity: 89dB (1w/1m)

Frequency response: 80Hz-



ACCESSORIES INCLUDED:

2 x Wall brackets

WARRANTY 3-year return to base

COMPLIANCE: RoHS, WEEE, CE

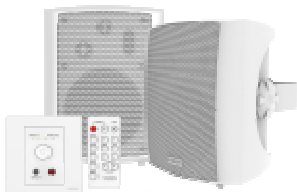
ORDER PART CODE: SP-1800 [SAP: 3635038]

Bundled with AV-1700 amplifier: AV-1700+SP-1800 [SAP: 3667252]

Bundled with TC2-AMP4 amplifier: TC2-AMP4+SP-1800 [SAP: 3664098]



Bundled with TC3-AMP: TC3-AMP+SP-1800 [SAP: 3692237]



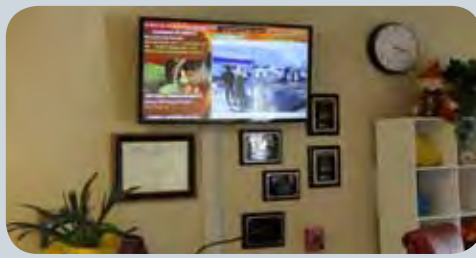
Repeat Signage digital signage software

Digital signage is about displaying still and moving images onto a display screen or video wall to engage with your audience...

1. Download Repeat Signage software onto your Windows computer
2. Easily create your presentations by inserting your logo, pictures, videos, text, clocks, RSS newsfeeds and other media into the software to promote your activities
3. Connect your computer to a display screen to play your presentations and engage with your audience



Repeat Signage: Howard Park School, UK



Repeat Signage: Merryhill School, California



Onion Lake Cree Nation, Saskatchewan

Repeat Signage™ V4 digital signage software for Windows

Repeat Signage digital signage software helps you get your message across and promote your products or service. It is easy to use and you can create a presentation and have it playing in minutes. [Trial download](#)

You need a Windows based PC, a display screen and Repeat Signage. Features include touch screen support, remote updating and scheduling of presentations, and it supports Windows 10, 8/8.1, 7, Vista and XP.

[See our success stories](#) [Contact us](#)



www.repeatsoftware.com



Repeat Signage: Caxton Publishers, SA



Albemarle Music Centre



Repeat Signage: Harrisburg International Airport